

Important Information:

This Refill System should only be installed after the printer has been converted to LYSON inks using Photochrome Cartridges. Do not use this set for the ink change over procedure!

Wichtige Information:

Diese Refill Kartuschen nur einsetzen, nachdem der Drucker bereits auf LYSON Photochrome Tinten umgestellt worden ist und mit Kartuschen druckt. Nutzen Sie dieses Set nicht für den eigentlichen Tintenwechsel!

31. August 2005

Installing the Refillable Cartridges

Please note:

All cartridges are exactly the same. The only difference is the chip with the colour information on it. Please install the cartridges carefully to avoid mistakes and contamination.

Description:

Basically the cartridge consists of three parts.

Main tank (big white plug at the end of the cartridge)
Sub tank (small blue plug in the middle of the cartridge)
Valve and filter (replaceable)

Initial filling:

- 1) First please check if the chip is properly mounted to the cartridge.
- 2) Remove the **two** plugs.
- 3) Attach the enclosed funnel to the main tank.
- 4) Fill in about **2,5 cm (1")** of the right ink.
- 5) Set the enclosed syringe to the outlet in front of the cartridge.
- 6) Please suck carefully until ink comes into the syringe.
- 7) Remove the syringe and splash the ink into the funnel.
- 8) With printer off set the cartridge into the corresponding slot of the printer.
- 9) Fill in the ink until the level is **1,5 cm** under the top of the cartridge.
- 10) Set the white plug onto the main tank (**IMPORTANT!**)

Repeat step 1) until 10) for the other colours.

Please do this carefully to avoid mistakes and contamination.

Refilling:

When the ink levels go down, you can refill the colours. Please always use **one** funnel for **one** colour, to avoid ink mixing. The minimum level is **2cm**. Please mark your cartridges at the relevant ink levels.

We recommend, **NOT** removing the cartridge when refilling it, because too much moving could damage the outlet of the cartridge.

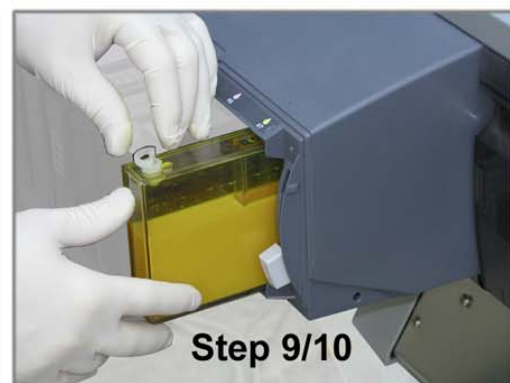
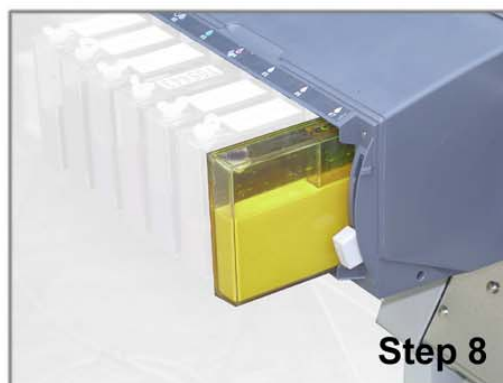
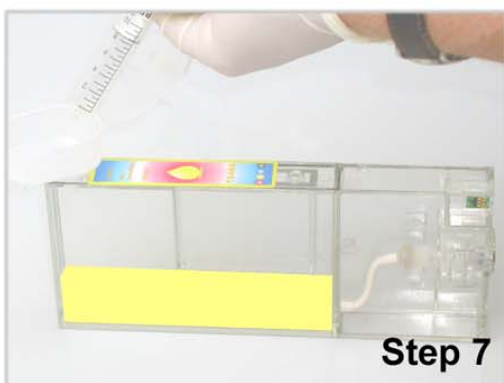
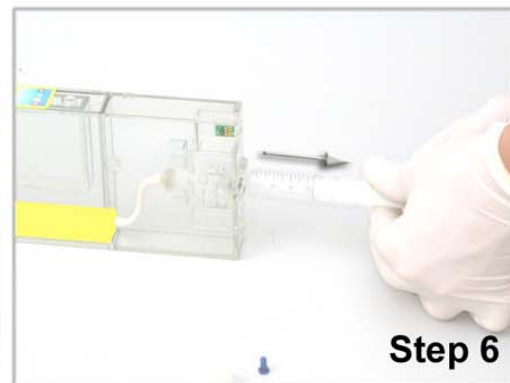
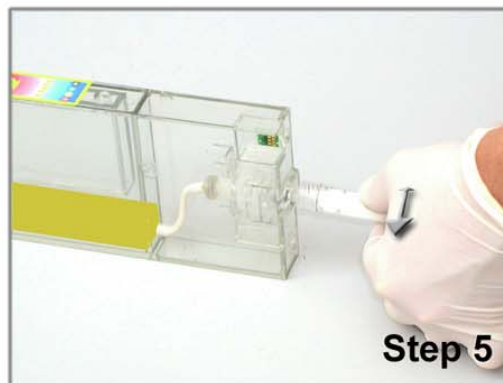
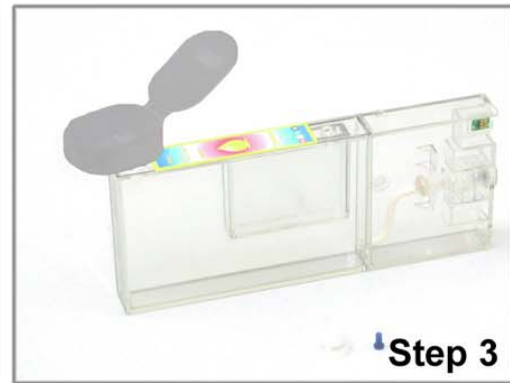
Please make sure, that the printer isn't printing while you are filling it.

The safest way is to switch the printer OFF.



These images show the installation step by step as described in the setup manual.

Diese Bilder zeigen die Einzelschritte wie in der Installationsanleitung beschrieben.



Ink counter elimination for Epson Stylus Pro 7600 / 9600

It is recommended that this procedure only be used on machines running a bulk feed system or refill cartridges. The machine will no longer count ink usage, and will not show an ink out condition. **The printer user is responsible for insuring that refill cartridges are filled to proper levels.** Please follow the instructions carefully, as incorrect entries could result in problems that would require a service call to reload the printer firmware.

Start with the printer powered **OFF**.

- Press and hold the **PAPER SOURCE**, **PAPER FEED DOWN** und **CUT/EJECT** buttons and power up the machine.
- When the display shows „**VIEW COUNTERS**“, release all buttons.
- Press **PAPER FEED DOWN** (2), until you see „**SERVICE CONFIG**“ on the display.
- Press „**SELEC TYPE**“ once.
- Press „**PAPER FEED DOWN**“ (5) until the display reads “**ED MODE**”.
- Press „**ENTER**“
- The display reads * **X**.
- Press „**PAPER FEED DOWN**“, until the display reads **O**.
- Press „**ENTER**“, and the display will read * **O**.
- Power the machine off.
- Power the machine on.

The printer will come Ready with a „O“ to the left of the ink cartridge status bars. Note that the status of all ink cartridges will always show full. This setting is written to the e-prom. And will not change when the power is cycled.

The information in this document is provided as a convenience. The procedure provided has been thoroughly tested and proven to be fit for its intended use, as of the issue date. The burden of insuring that this information is used in a responsible manner falls to the user. LYSON can not and will not accept liability for the use of this material.

Issue date: August 31, 2005

Ink counter elimination for Epson Stylus Pro 4000

It is recommended that this procedure only be used on machines running a bulk feed system or refill cartridges. The machine will no longer count ink usage, and will not show an ink out condition. **The printer user is responsible for insuring that refill cartridges are filled to proper levels.** Please follow the instructions carefully, as incorrect entries could result in problems that would require a service call to reload the printer firmware.

Start with the printer powered **OFF**.

- Press and hold the ← + ↑ + ↓ buttons and power up the machine.
- When the display shows „**SELF TESTING**“, release all buttons.
- Press ↓, until you see „**SERVICE CONFIG**“ on the display.
- Press → **once**, the display reads "**CHG DEVICE-ID**".
- Press ↓ (2) until the display reads "**ED MODE**".
- Press →, the display reads ***X**
- Press ↓ the display reads **0**
- Press →; the display reads: ***0**
- Power the machine off.
- Power the machine on.

The printer will come Ready with (**0XXXXXXXX**) on the ink cartridge status bars. This setting is written to the e-prom. And will not change when the power is cycled.

The information in this document is provided as a convenience. The procedure provided has been thoroughly tested and proven to be fit for its intended use, as of the issue date. The burden of insuring that this information is used in a responsible manner falls to the user. LYSON can not and will not accept liability for the use of this material.

Issue date: August 31, 2005